

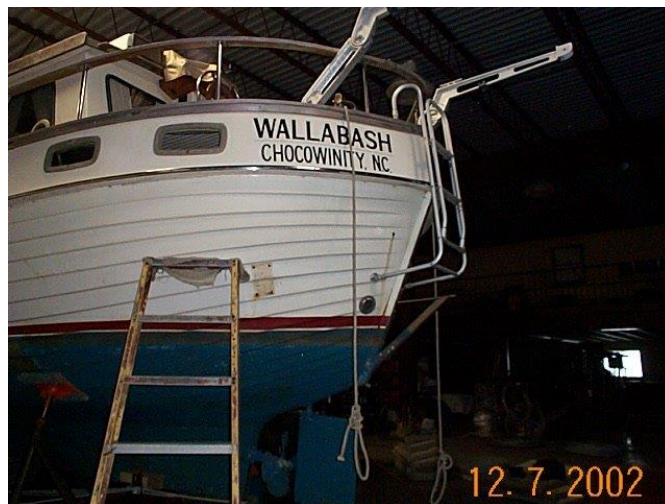
Refit Winter 2002

Once we had Finlandia (ex Wallabash) inside we could start to tear into her, pretty much knowing that one thing would lead to another.

This is the helm station as purchased.



The first item to go was the swim platform, already removed in this photo.



We started gutting the aft cabin. Leaking ports had ruined the plywood.



We were still under the illusion that we could “fix” things without major surgery.



The more you get into things, the worse it gets.



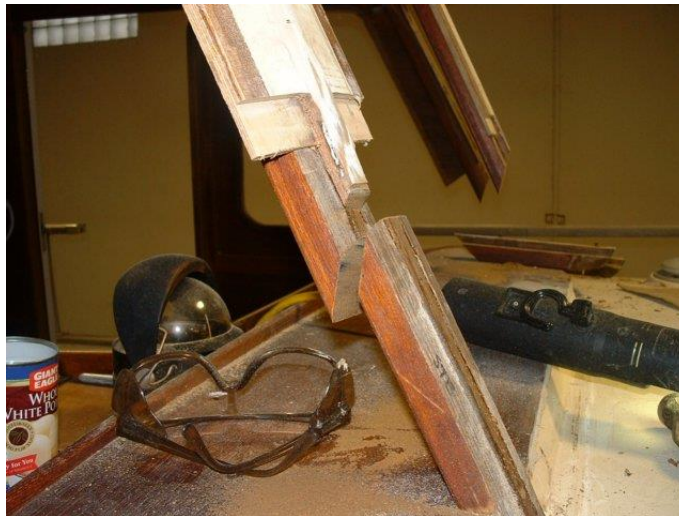
Using a router to create a ship-lap joint.



The lower portion of the pilot house windows were all rotten requiring replacement.



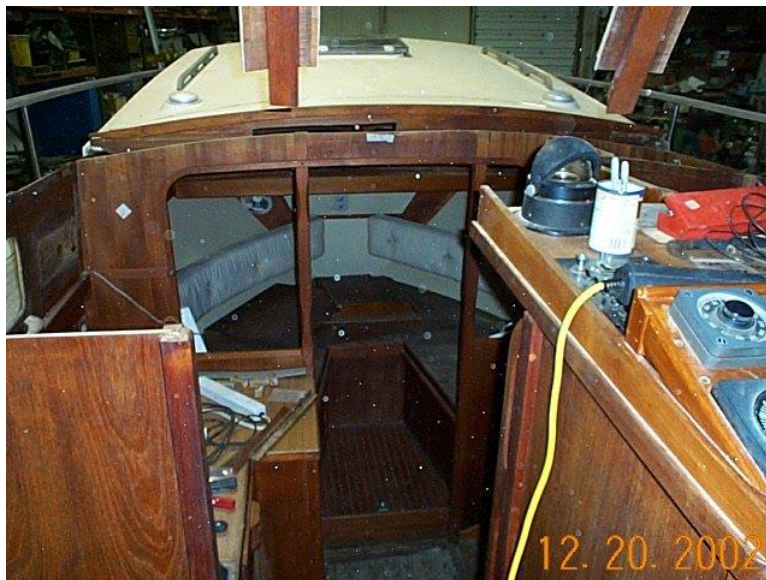
Reality begins to set in. Since we were inside this was the one and only chance to do it right. It was decided to remove the entire forward cabin roof in order to essentially replace all of the forward cabin sides as well as the cabin front. To do this the structure around the forward windows needed to be cut. When we did this you can see how much the house roof "sprung".



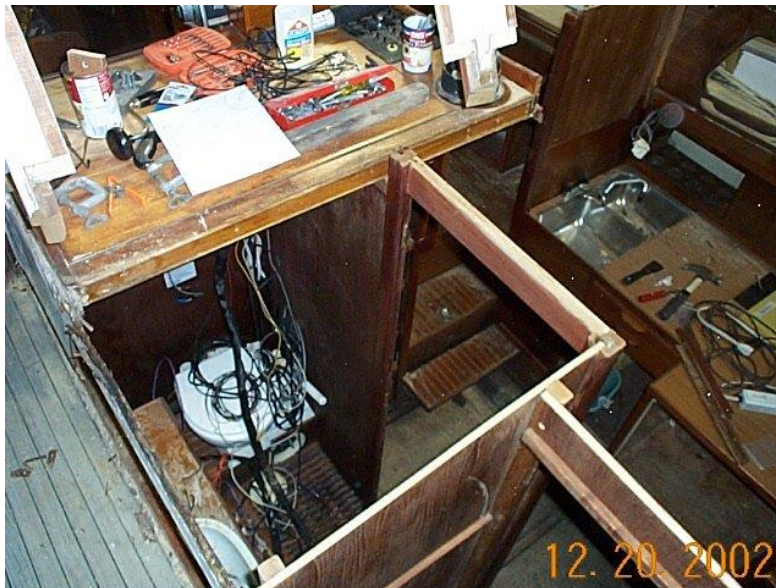
The cabin roof fully detached and moved forward.



Looking forward into the lower cabin.



Head and gally mess from above.



Galley



Starboard cabin side totally removed.



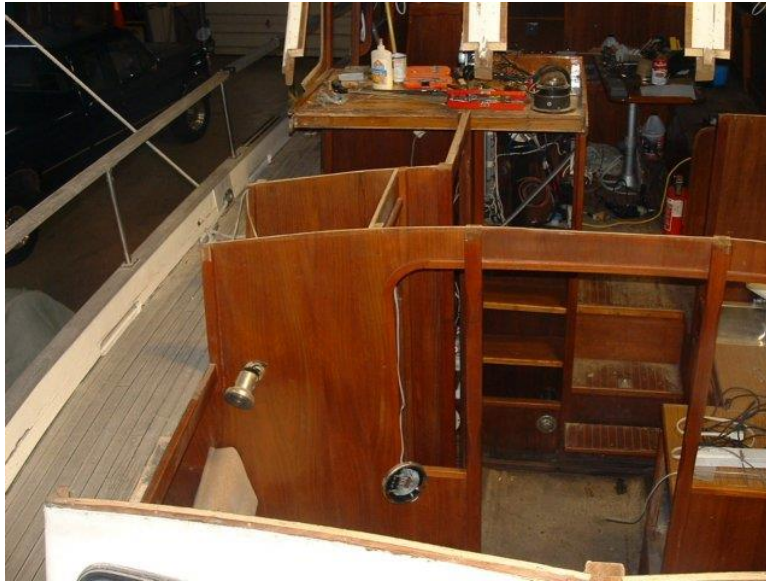
Notice how rotten the lower edge of the old cabin sides were. Removal was not all that difficult.



Lowering the cabin top to the floor to get it out of the way.



Forward looking aft into the lower cabin.



There was a lot of rotten wood in the rails.



More rot.



Cleaned up region waiting for replacement wood.

