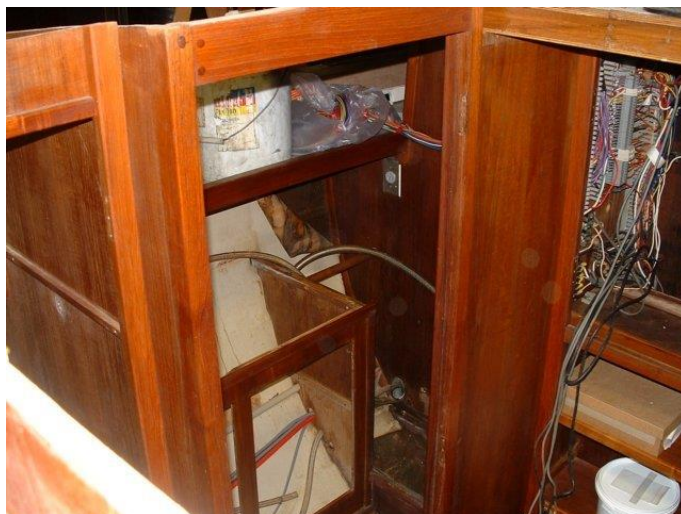


Refit Spring 2003

Looking into the head and electrical locker



Front deck with starboard rail rot removed



Galley area



Test fitting starboard forward cabin sides and laying out port locations



Chemically stripping the woodwork



More stripping



Gutted galley



Sanding the replacement cabin sides



"Happily" stripping the woodwork



Installing additional deck beams in the aft cabin



Attaching the beams to the deck



Installing replacement plywood in the starboard rail



Stripping the woodwork in the head



More stripping



Finished deck beams



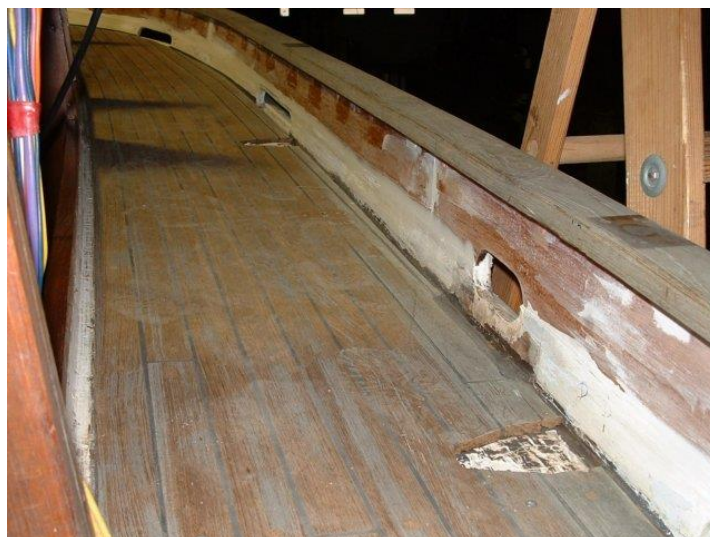
Looking pretty sad in the shop. People who stopped by to visit generally left shaking their heads, probably with good reason.



The toe rail, while stiff enough as a low rail, flexed too much with the wooden handrails. Several stainless brackets were fabricated to help support the rail.



The new plywood was installed with Sikaflex. It should make replacement easier when that time ever comes.



All the floorboards were stripped, sanded, epoxy coated then varnished.



Massive amounts of Sikaflex were used to bed the new cabin sides. The cabin sides were epoxy coated with special attention paid to the end grain.



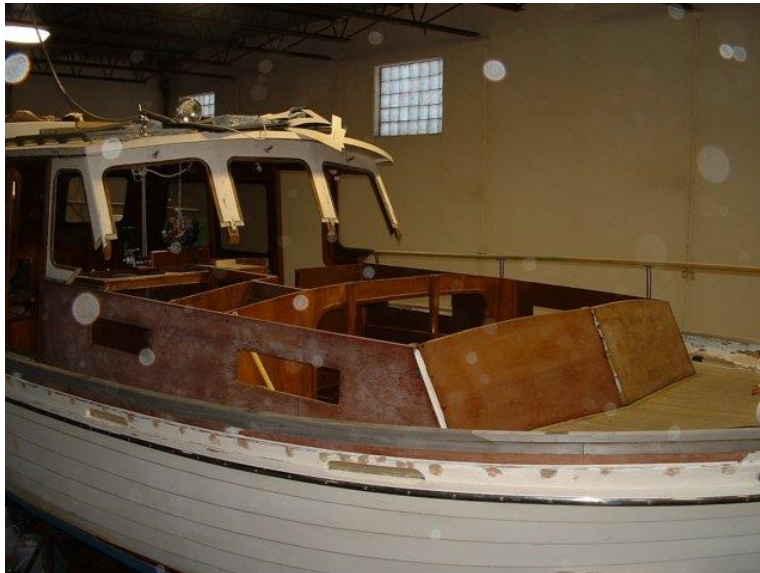
Fitting the new forward cabin front. Originally there were ports installed in the facing forward. It was decided to eliminate these during the re-build to reduce any possible leakage issues.



Removing the rotten wood in the perimeter of the forward cabin roof. This wood was replaced with cedar.



New cabin sides attached



Cabin top ready for replacement



Eventually you get smarter. Using a forklift to lift the cabin top onto the boat.



Roof back in place



Tearing apart the inside steering station



We have gone this far so it was decided to replace all the main salon forward window port framing.



Looking back from the bow



Main support structure getting installed



Fitting the plywood framing, use the old pieces as patterns



New framing from the inside



Working on the back deck. The teak was stripped off and the failed gelcoat is being removed.

